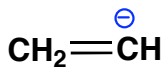
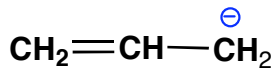


Esercizi sulla RISONANZA

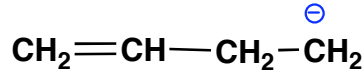
1. a) Scrivi, dove necessario, tutte le **strutture di risonanza** per i seguenti composti recanti una **carica negativa**



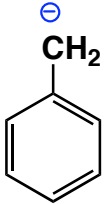
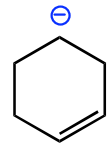
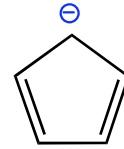
anione Vinile



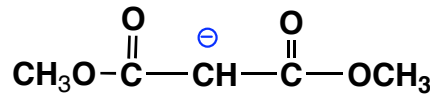
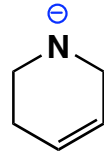
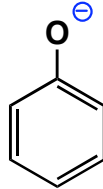
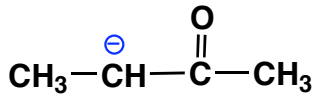
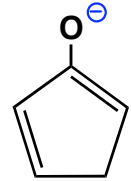
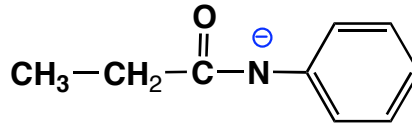
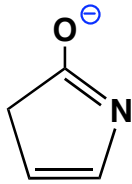
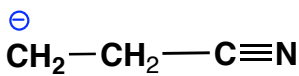
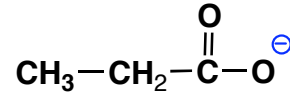
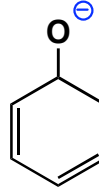
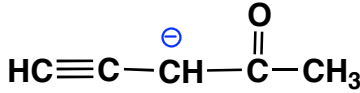
anione Allile



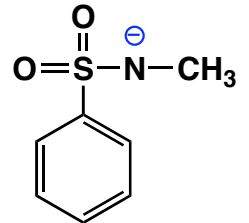
a. ciclopentadienile



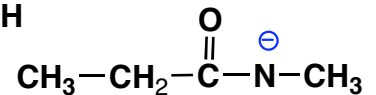
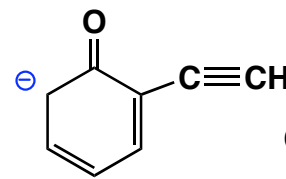
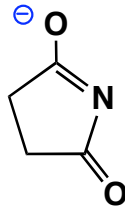
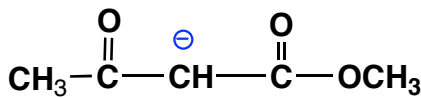
a. Benzile



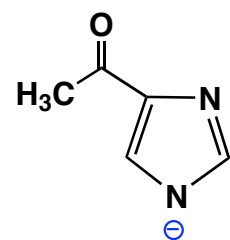
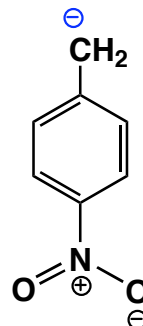
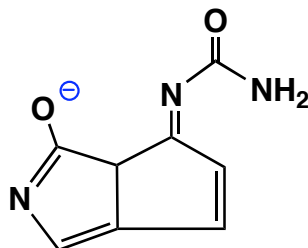
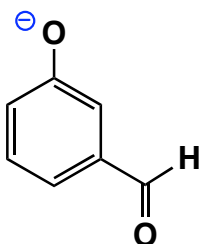
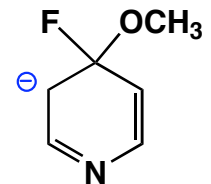
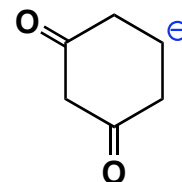
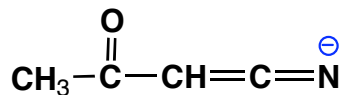
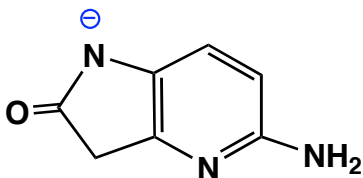
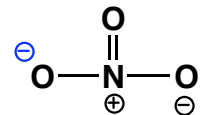
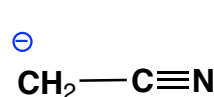
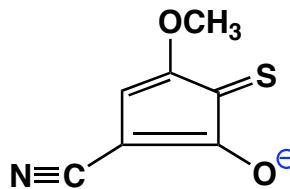
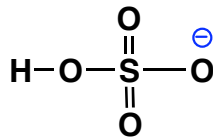
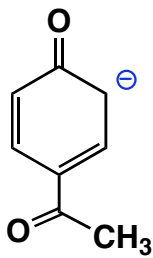
a. malonato



a. Fenato

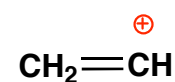


a. acetoacetato

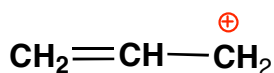


Esercizi sulla RISONANZA

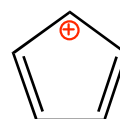
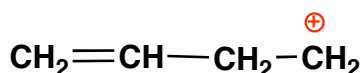
1. **b)** Scrivi, dove necessario, tutte le **strutture di risonanza** per i seguenti composti recanti una **carica positiva**



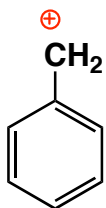
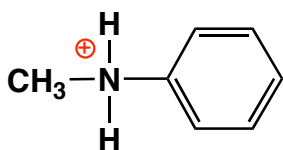
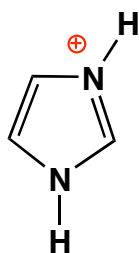
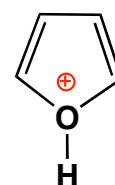
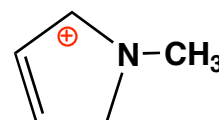
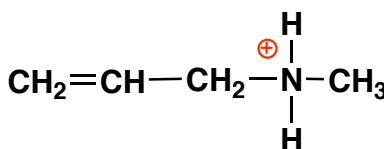
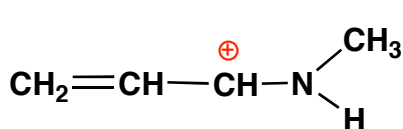
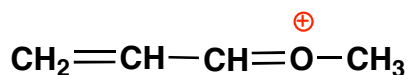
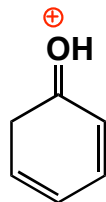
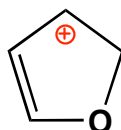
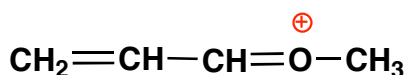
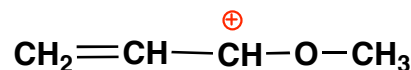
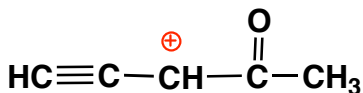
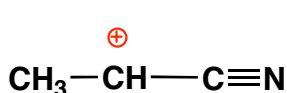
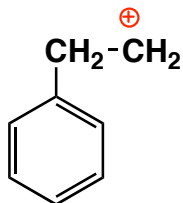
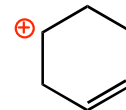
catione Vinile



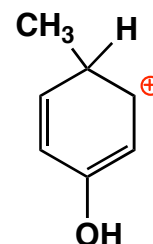
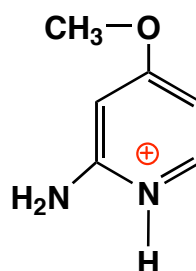
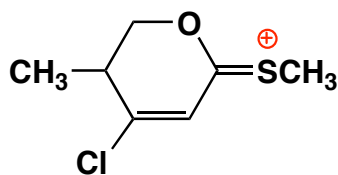
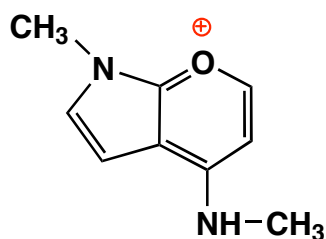
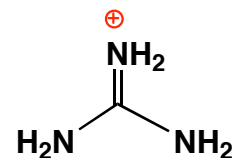
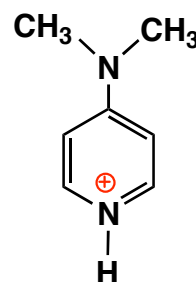
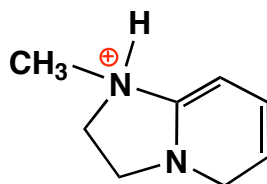
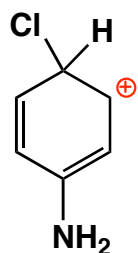
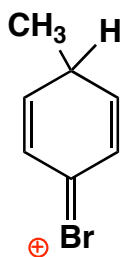
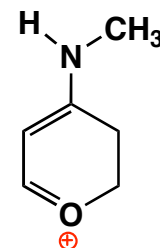
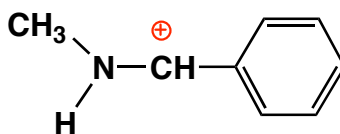
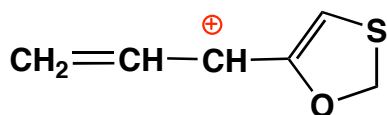
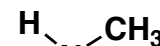
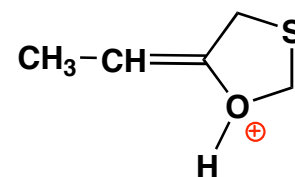
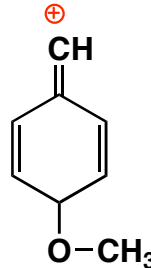
catione Allile



c. ciclopentadienile

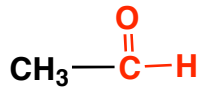


catione benzile

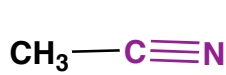


Esercizi sulla RISONANZA

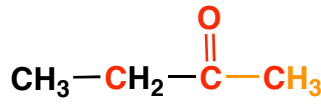
1. c) Scrivi, dove necessario, tutte le **strutture di risonanza** per i seguenti composti **NEUTRI**



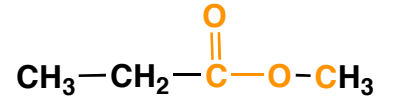
etanale



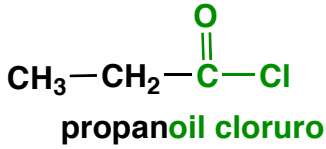
propanonitrile



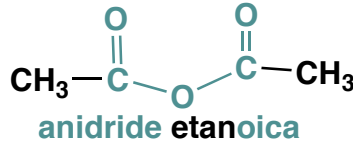
butanone



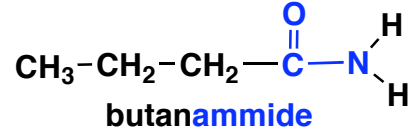
propanoato di metile



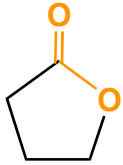
propanoil cloruro



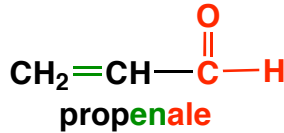
anidride etanoica



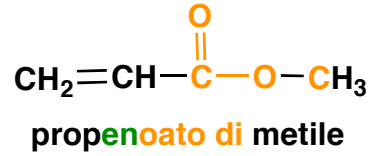
butanammide



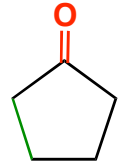
(lattone = estere ciclico)



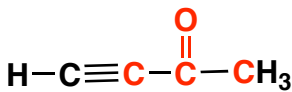
propenale



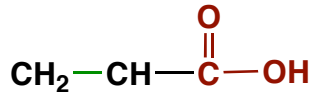
propenoato di metile



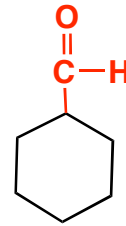
ciclopentanone



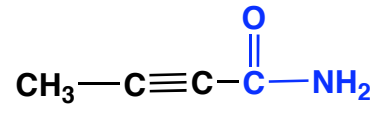
butinone



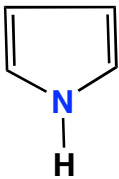
acido propanoico



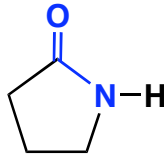
cicloesancarbaldeide



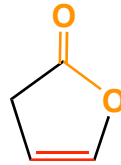
butinammide



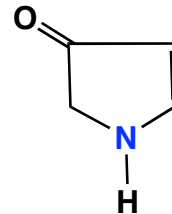
pirrolo



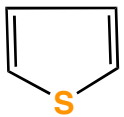
(lattame = ammido ciclica)



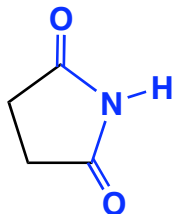
furano



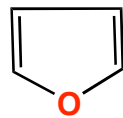
anidride succinica



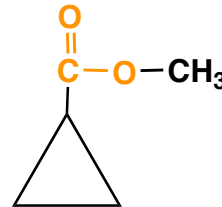
tiofene



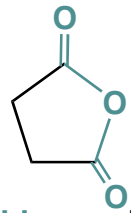
succinimide



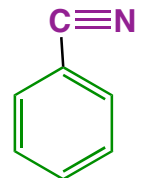
furano



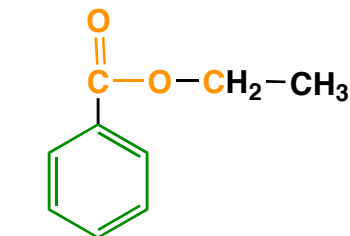
ciclopropancarbossilato di metile



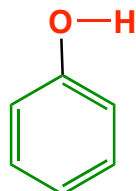
anidride succinica



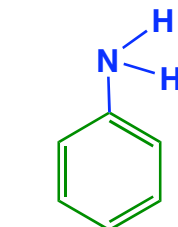
benzonitrile



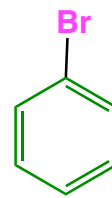
benzoato di etile



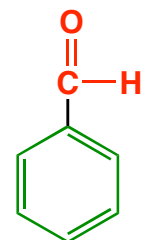
Fenolo



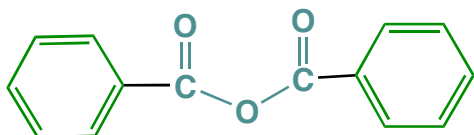
amminobenzene



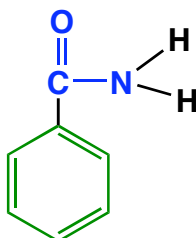
bromobenzene



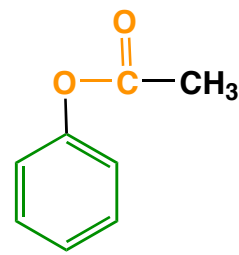
benzaldehyde



anidride benzoica



benzammide



etanoato di fenile

